

1 SIEVING EXERCISE FOR DESIGNATED ASSETS BETWEEN 5 AND 15 KM

Between 5 and 15 km, there are 654 nationally designated assets, including:

- Two World Heritage Sites;
- Two Registered Battlefields;
- Two Gardens and Designed Landscapes (GDLs);
- 10 regionally designated Conservation Areas;
- 77 Scheduled Monuments; and
- 561 Listed Buildings (28 Category A, 282 Category B, and 251 Category C).

For heritage assets between 5 km and 15 km, a sieving exercise was undertaken to determine the designated heritage assets that lie within the Zone of Theoretical Visibility (ZTV) and / or for which their cultural significance relies on long distance views and distant landscape context. Only those heritage assets identified as having potential to receive a change in setting that affects cultural significance as a result of the Proposed Development have been included in the assessment.

The sieving exercise of designated heritage assets indicates that there are several areas where assets are not within the ZTV and / or there is limited to no potential for views towards or across the asset. Therefore, the cultural significance or the appreciation of the cultural significance of the assets is unaffected as described in the following sections. All plates are taken from Figure 12.4.1 in the EIA Report.

1.1 ASSETS TO THE NORTH

The area to the north of the Proposed Development extends between Cumbernauld to the north-west and Linlithgow to the north-east (Plate 1). The assets to the north, generally lie within urban settlements and rural fringes, positioned at lower elevations on the slopes leading towards the Forth and Kelvin valleys.

Due to the topography, assets to the north of the Proposed Development largely fall out of the ZTV, as shown on Plate 1. This lack of intervisibility is due to the two separate hill ranges located between the Site and Falkirk, both running east to west. The most southerly of these hill ranges lay between Armadale and Airdrie. The more northerly hill range lay between the A801 north of Avonbridge and Cumbernauld. All assets to the north of the hill range running between the A801 and Cumbernauld have been scoped out as they fall outwith the ZTV and have no historic association to the Site.

The area for exclusion includes the settlements of Arnothill, Cumbernauld and Falkirk as well as Callendar Park Garden and Designed Landscape (GDL00078), and registered Battlefield of the Battle of Falkirk II (BTL9). The Conservation Areas of Arnothill and Dollar Park falls outwith the ZTV and has been scoped out.

The settlement of Linlithgow is located to the north of the Hillerston Hills, located to the west of the River Avon valley. These hills screen much of Linlithgow from views of the Proposed Development. Assets within Linlithgow have therefore been screened out of this assessment, including the Linlithgow Palace and High Street Conservation Area and Upper Linlithgow and Union Canal. A small number of assets located to the west of Linlithgow, with views running south through the River Avon valley, are retained. The assets retained include BLT25, the Battle of Linlithgow Bridge, which partially falls within the ZTV of the Proposed Development.

Due to topography, the Antonine Wall World Heritage Site, Buffer Zone and associated Scheduled Monuments, located at the northern extent of the 15 km Study Area, are largely outwith the ZTV. However, a small section of the Antonine Wall World Heritage Site and associated buffer zone, near Inveravon and Nether Kinnell, adjacent to the River

Avon, falls within the ZTV, and due to the significance of the Antonine Wall, is included within the assessment.

Due to their elevated position within the landscape, the settlement of Torphichen, and the scheduled prehistoric hillforts and sites around Torphichen to the north-east, including the Cairnpapple Hill Ceremonial Complex (SM90053), as well as the Battlefield of Linlithgow Bridge (BTL25) have also been included within the assessment.

Landscape viewpoint 21, detailed below, illustrate the operational and consented wind farm visual aspects from the north-east, as shown on EIA Report Figure 3959 Torrance Wind Farm Extn II_EIAR Figures NatureScot Cumulative Wirelines Photomontages (PHOMs) with visualisations provided in Volume 3:

Figure 6.47 – VP21 - Cockleloy

This visual show the density of turbines already visible in views from the north-east towards the Proposed Development, confirming the visibility of turbines from assets around Torphichen.

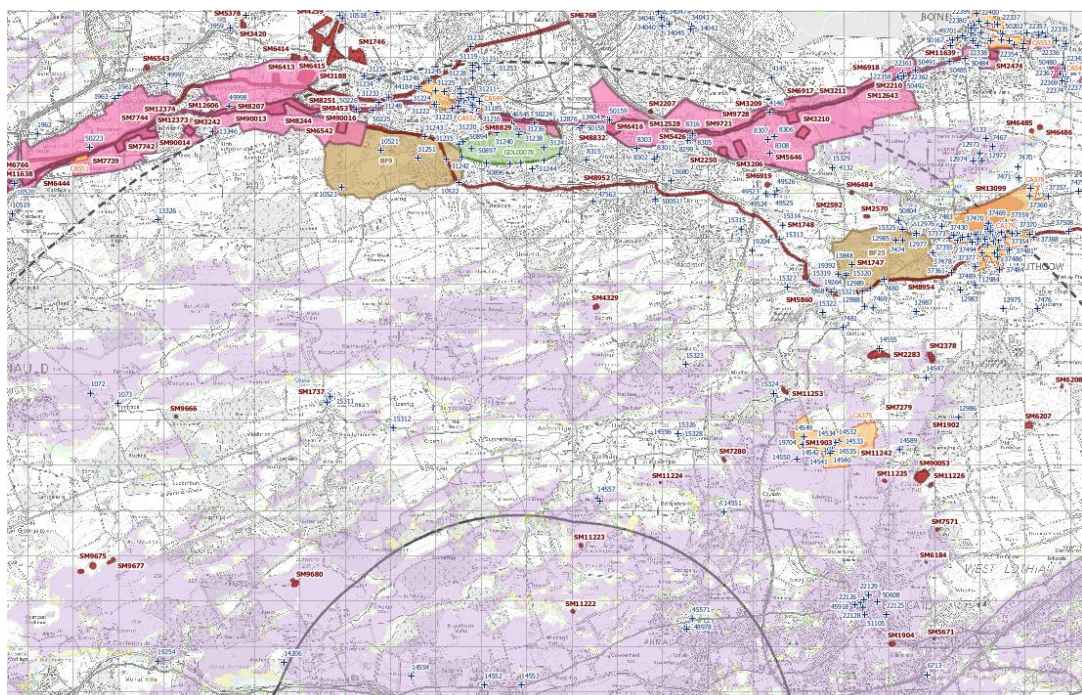


Plate 1a: Overview of Designated Assets

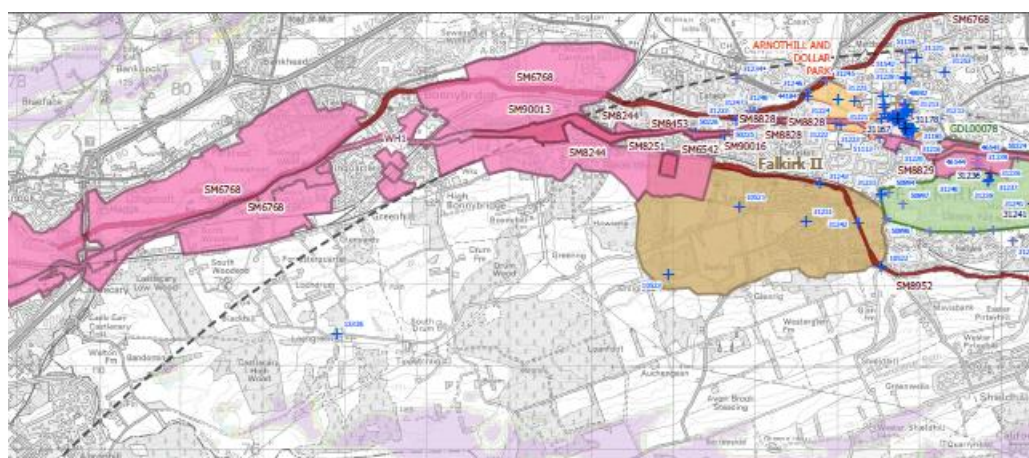


Plate 1b: Designated Assets to the North of the CSA - Falkirk

1.2 ASSETS TO THE EAST

The area to the east of the Proposed Development extends from Bangour Village, north of Livingston to the village of Auchingray to the south-east, and takes in the settlements of Bathgate, Blackburn, Bangour Village, Livingston, Addiewell and West Calder to the east.

Assets associated with settlements, to the east of the Site are largely located within the ZTV of the Proposed Development. As such, assets associated with these settlement sites, including Livingston Village Conservation Area are retained for inclusion within the assessment. The key exception to this being Bangour Village Conservation Area and associated listed buildings. This group of assets sits outwith the ZTV, with visibility to the Proposed Development obscured by the southern range of the Hillerston Hills, located between Bathgate and Linlithgow (Plate 2a). As such, Bangour Conservation Area has been scoped out of this assessment.

To the north of Bangour Village, a cluster of scheduled monuments are recorded between Torpichen Broxburn. These again sit outside of the ZTV, with visibility to the Proposed Development obscured by the southern range of the Hillerston Hills. As such these scheduled monuments have been scoped out of this assessment.

Three scheduled monuments are recorded between Addiewell and the southern extents of Livingston. These scheduled monuments sit within the ZTV and have been retained for assessment. To the south-east of the Proposed Development is a large rural woodland area which includes two Scheduled Monuments (SM11210 and SM11227) and the Harburn House Garden and Designed Landscape (GDL00208) and associated Listed Buildings. These assets fall within the ZTV of the Proposed Development and have been retained for assessment.

There are several landscape viewpoints that illustrate the operational and consented wind farm visual aspects from the south as detailed below and shown on EIA Report Figure 3959 Torrance Wind Farm Extn II_EIAR Figures NatureScot Cumulative Wirelines_PHOMs with visualisations provided in Volume 3:

Figure 6.39 - VP13 - Development around M8 Junction 4A and approaches option 3

Figure 6.37 – VP11 - Properties at Polkemmet, Whitburn

Figure 6.37 – VP19 - Bathgate. Junction of Drumcross Road and Glenmavis Drive

These visuals show the density of turbines in views from the east westwards towards the Proposed Development, confirming the visibility of turbines from assets east of the Proposed Development

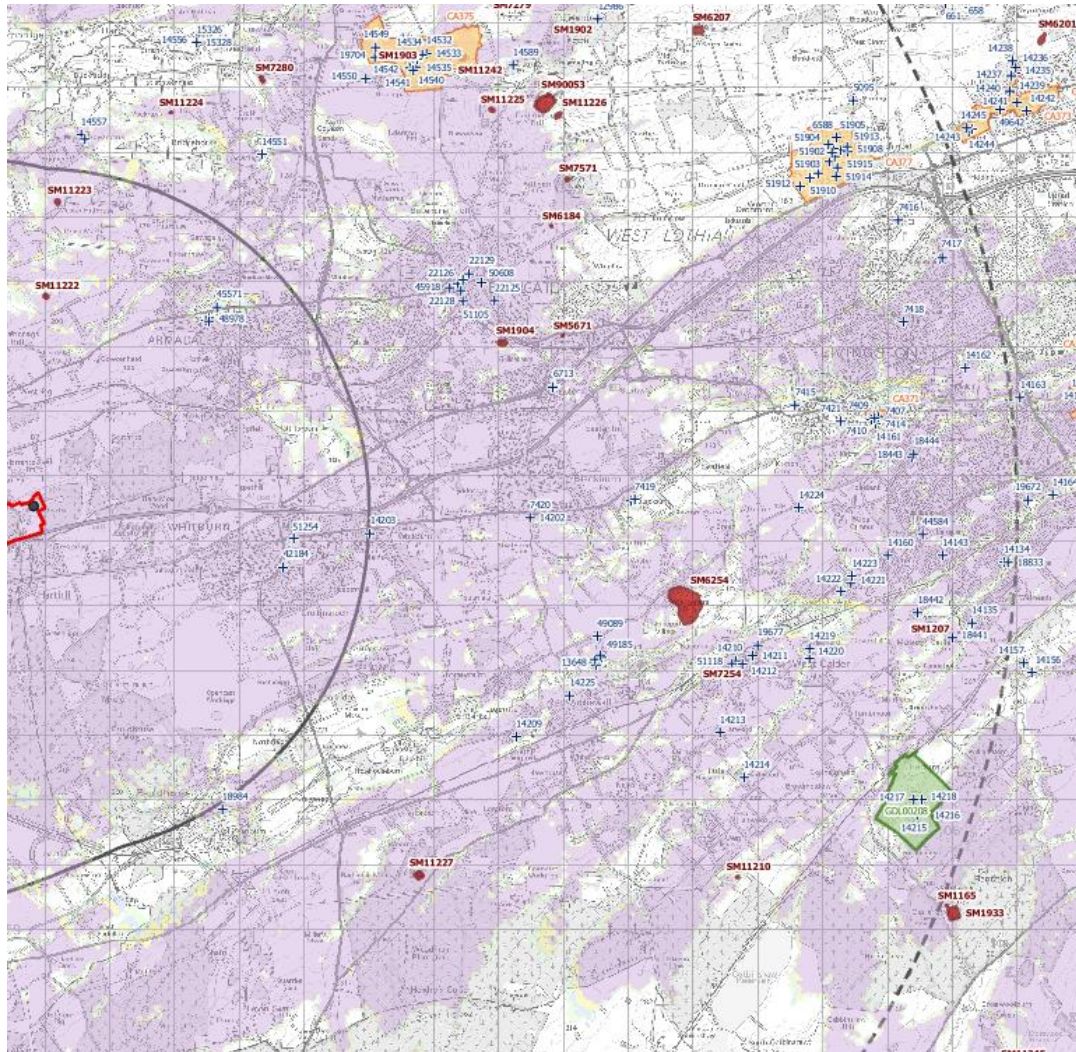


Plate 2a: Designated Assets to the East of the CSA

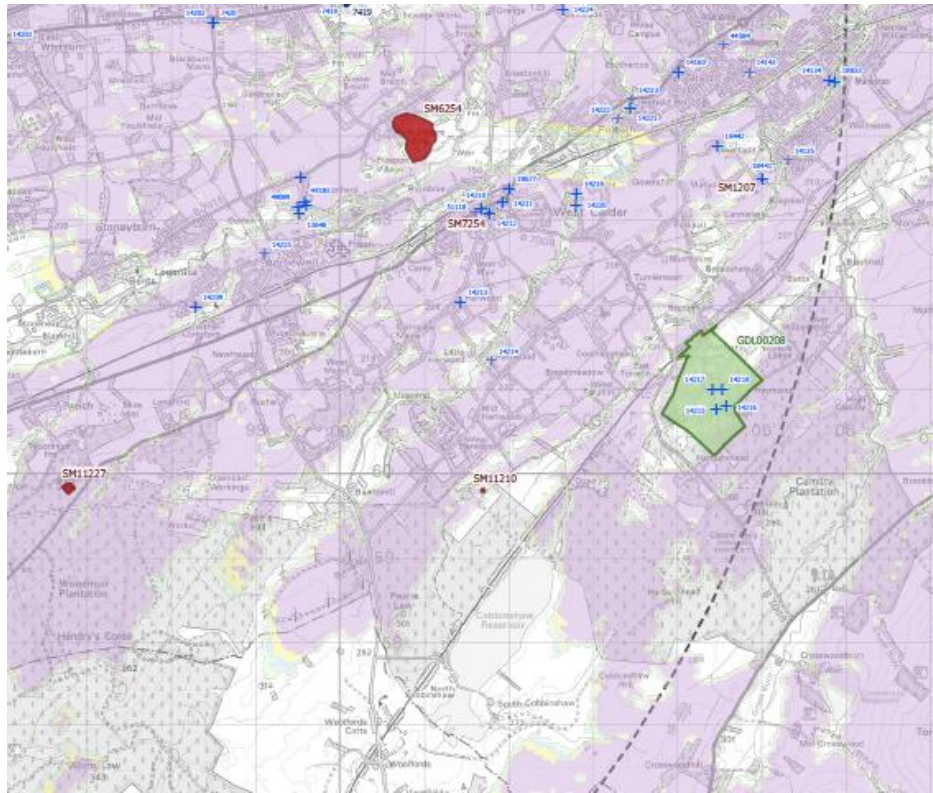


Plate 2a: Designated Assets to the East of the CSA

A full list of assets excluded or included is detailed in Table 12.2.1 in Section 2 and Table 12.2.3 in Section 3.

1.3 ASSETS TO THE SOUTH

The area to the south of the Proposed Development extends from the village of Auchingray in the south-east to the town of Wishaw in the south-west and comprises a predominately rural landscape with large areas of woodland. Key settlements are located to the south-west of the Site and include Carluke, Wishaw, Newmains, Bonkle and Allanbank.

Assets associated with settlements around Wishaw, including Wishaw, Newmains, Bonkle and Allanbank are largely within the ZTV and are therefore assessed. A thin line of Listed Buildings just to the north of these settlements are located outwith the ZTV, screened from the Proposed Development by a combination of vegetation and topography, with the Leven Seat Hill Range (located south of Shotts) and Tippet Know hills (located north of Shotts) situated between these settlements and the Site. These listed buildings have been scoped out of the assessment.

Of the five assets in Carluke, three are outwith the ZTV and have been scoped out of this assessment. Views to the Proposed Development are screened by a combination of vegetation and topography, with the Leven Seat Hill Range sitting between Carluke and the Site.

A cluster of five scheduled monuments and three listed buildings are located in and around Worm Law, south-east of the Site. Worm Law hill screens these assets from the Proposed Development and as such they have been scoped out of this assessment.

A single Listed Building lies in the ZTV in this area: the Auchterhead Muir Monument (LB671). This asset has been retained for assessment.

There are several operational and consented wind farms to the south of the Proposed Development, including Black Law and its Extensions, Harburnhead, Pates Hill, Pearie Law, Heathland, and Longhill Burn (Figure 12.4.2). There are several landscape viewpoints that illustrate the operational and consented wind farm visual aspects from the north as detailed below and shown on EIA Report Figure NatureScot Cumulative Wirelines_PHOMs with visualisations provided in Volume 3:Blade Tip ZTV. Asset LB671 sits within the Black Law Wind Farm, with the operational turbines creating a significant visual barrier between the asset and the Proposed Development. As such this asset will be scoped out of the assessment.

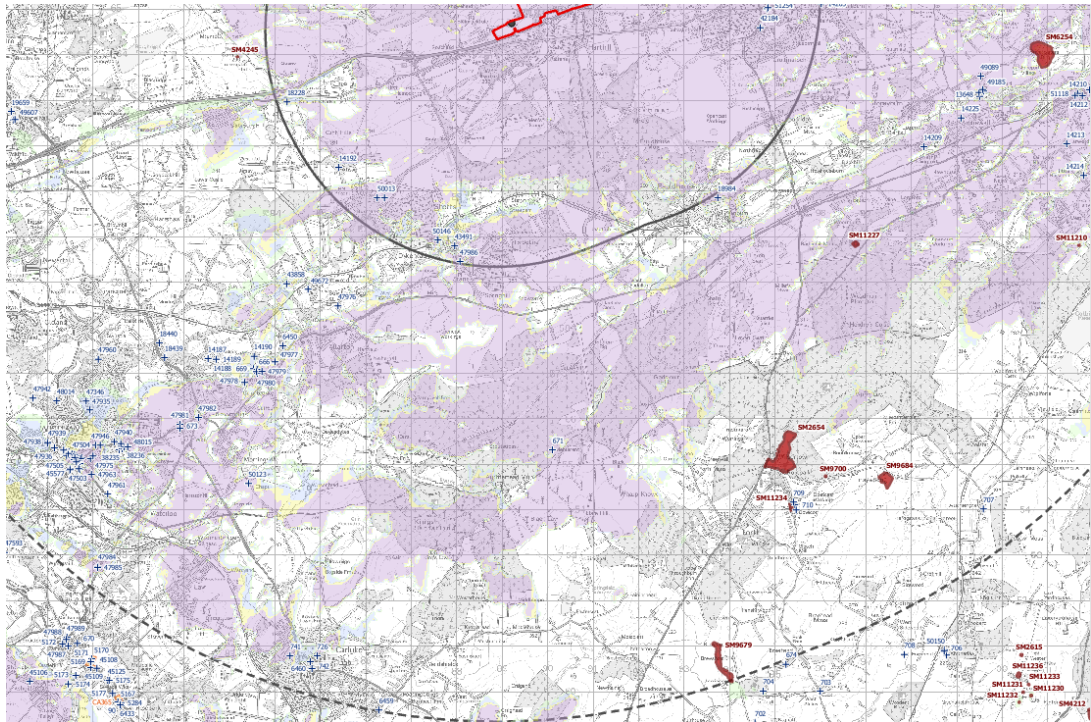


Plate 3a: Designated Assets to the South of the CSA

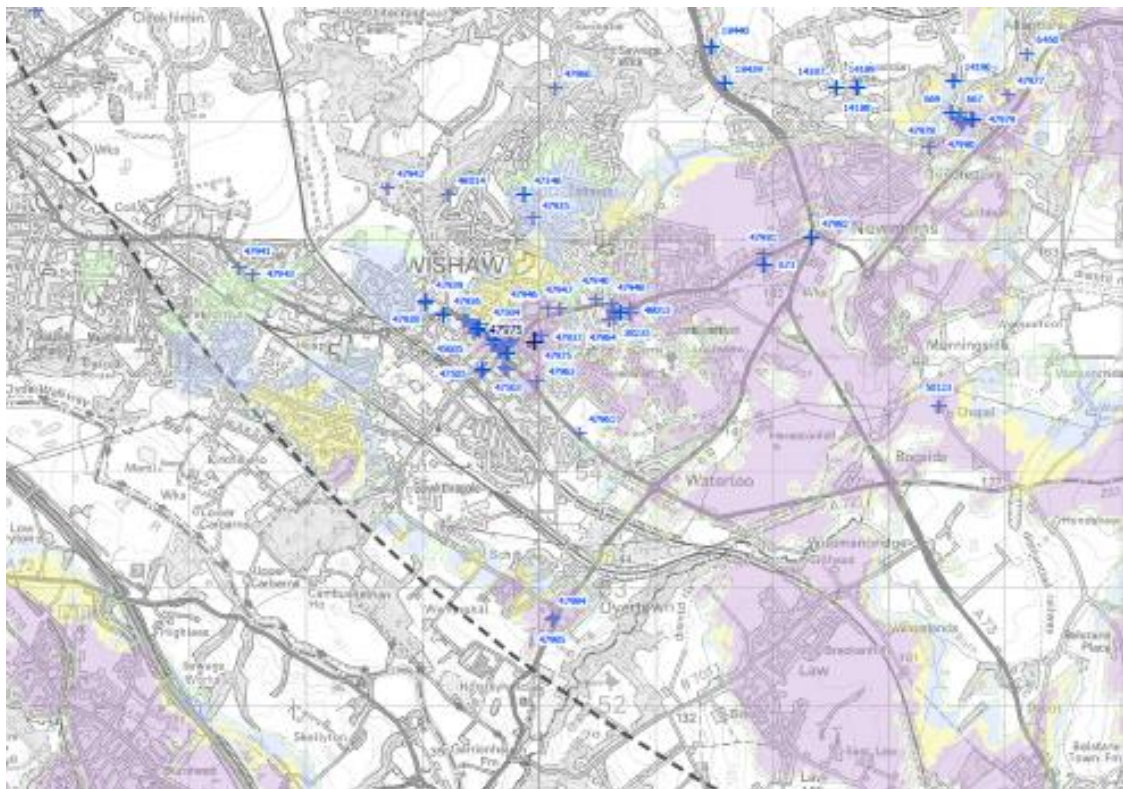


Plate 3b: Designated Assets in and around Wishaw, South of the CSA

A full list of assets excluded or included is detailed in Table 12.2.1 in Section 2 and Table 12.2.2 in Section 3.

1.4 ASSETS TO THE WEST

The area to the west of the Proposed Development extends from Wishaw to Cumbernauld. The key settlements are Airdrie, Coatbridge and its surrounding villages, inclusive of the Drumgelloch, Victoria and Town Centre and Balirhill and Dunbeth Conservation Areas, Calderbank, Salsburgh, NewStevenston and Holytown. The village of Caldercruix is also present, being located east of Airdrie along the A89.

Assets associated with these settlement sites are largely outside the ZTV, screened from the Proposed Development site by hills north and south of Shotts. A limited number of Listed buildings around the Drumgelloch Conservation Area are within the ZTV and have been included for assessment. The remaining conservation areas and Listed Buildings between Airdrie and Coatbridge have been scoped out of the assessment. A single listed building in NewStevenston falls within the ZTV and will be assessed. Listed Buildings around Caldercruix also fall within the ZTV of the Proposed Development. Otherwise, all listed buildings outwith the ZTV have been scoped out.

A cluster of eight scheduled monuments are located north and south of Caldercruix. Seven of these are within the ZTV and will be assessed, namely the Bracco Prehistoric and Medieval monuments (SM4245, SM9661, SM9664, and SM9665) and the Avonhead (SM9675/SM9677) and Lochend (SM9680) Collierys. A single scheduled monument is located north of Airdrie, which falls outside of the ZTV due to aforementioned hills between Airdrie and the Proposed Development site. A cluster of four scheduled monuments are located south of Airdrie which again fall outside of the ZTV and will not be taken forward to assessment, namely the Monkland Canal Scheduled Monument SM11342/SM11344) which runs through Airdrie, the Calderbank Iron Works (SM10298), and the Drumbowie Farm Anti-Aircraft Battery (SM11197). There are no scheduled monuments between NewStevenston and Wishaw to consider.

There are several landscape viewpoints that illustrate the operational and consented wind farm visual aspects from the south as detailed below and shown on EIA Report Figure 3959 Torrance Wind Farm Extn II_EIAR Figures NatureScot Cumulative Wirelines_PHOMs with visualisations provided in Volume 3:

Figure 6.44 – V18 – Hillend Reservoir

Figure 6.42 – VP16 – Forrestfield Village on Forest Road

These visuals show the limited visibility of the Torrance site from close to Caldercruix with visibility becoming more intrusive within the 5 km Study Area.

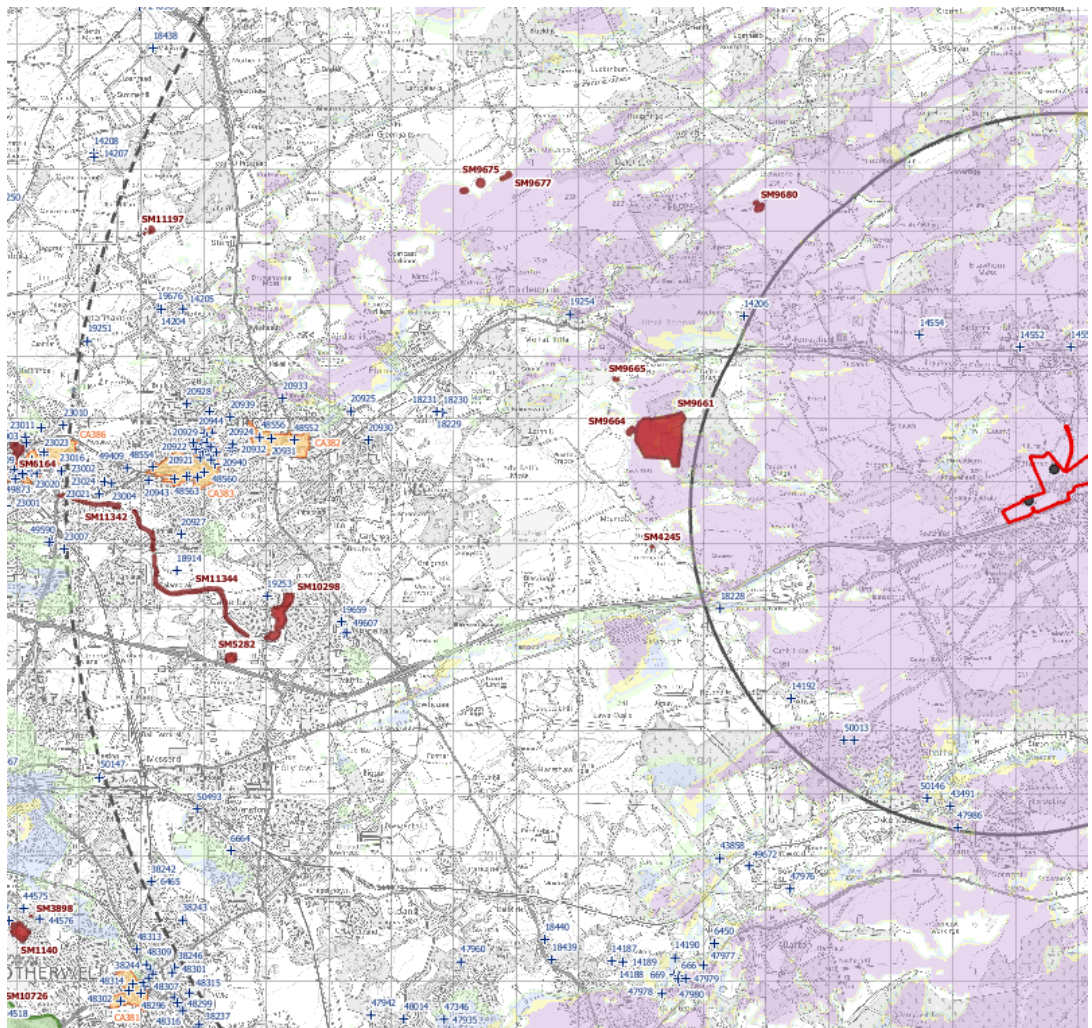


Plate 4a: Designated Assets to the West of the CSA

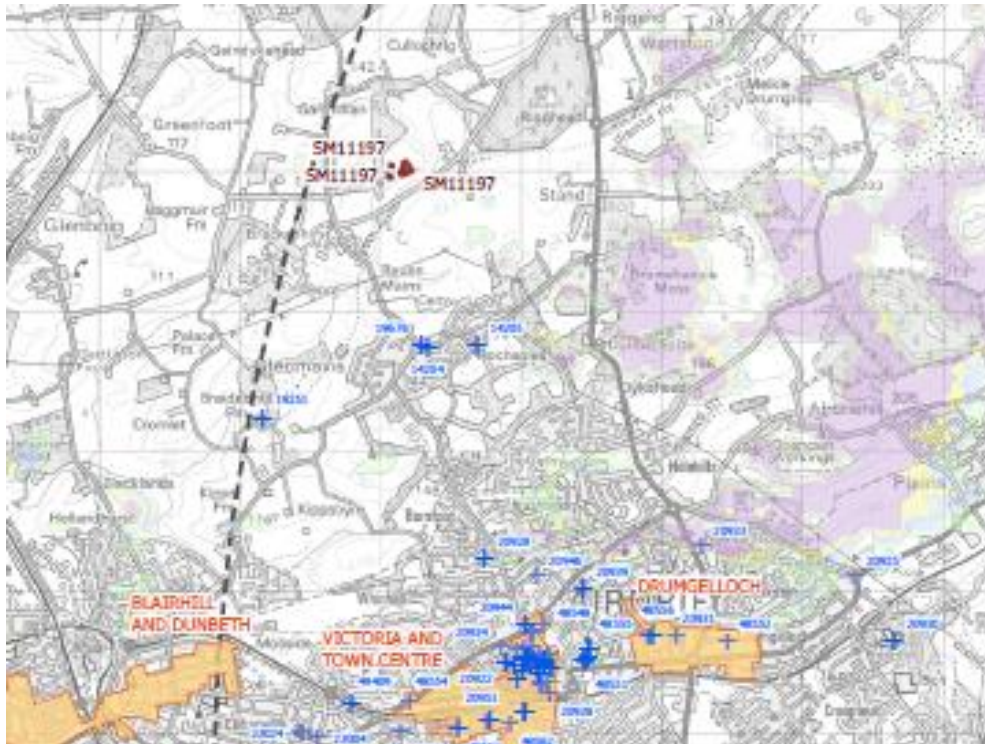


Plate 4b: Designated Assets in and around Airdrie, West of the CSA

A full list of assets excluded or included is detailed in Table 12.2.1 in Section 2 and Table 12.2.2 in Section 3.

2 SELECTION OF ASSETS SCOPED OUT

A review of the Zone of Theoretical Visibility (ZTV) and heritage assets, as described in the preceding section, has resulted in 496 heritage assets scoped out of consideration for changes to setting that affects cultural significance. The final selection of assets scoped out of consideration are detailed in Table 12.2.1.

Table 12.2.1: Assets Scoped Out of Setting Appraisal

Type	HES Reference	Category	Name	In ZTV?
Registered Battlefield	BF9	n/a	Falkirk II	N
Gardens & Designed Landscapes	GDL00078	n/a	Callendar Park	N
Scheduled Monument	SM10298	n/a	Calderbank Iron Works, furnaces and associated works	N
Scheduled Monument	SM11197	n/a	Drumbowie Farm, anti-aircraft battery, 350m WSW of	N
Scheduled Monument	SM11226	n/a	Windywa's Silvermine, silvermine 300m SW of Wester Tartraven	N
Scheduled Monument	SM11234	n/a	Cleugh House, bell pits and inclined plane 130m SSW of	N
Scheduled Monument	SM11253	n/a	Torphichen Bridge, mill, lade & trackway 200m NE of	N
Scheduled Monument	SM11342	n/a	Monkland Canal, Coatbank Street to Paddock Street, Coatbridge	N
Scheduled Monument	SM11344	n/a	Monkland Canal, Paddock Street to intersection with North Calder Water	N
Scheduled Monument	SM12528	n/a	Antonine Wall, 320m S of Inchyra Grange Hotel	N
Scheduled Monument	SM13099	n/a	Linlithgow Palace, Peel and Royal Park	N
Scheduled Monument	SM1737	n/a	Slamannan, motte	N
Scheduled Monument	SM1747	n/a	Manuel Nunnery	N
Scheduled Monument	SM1748	n/a	Almond Castle	N
Scheduled Monument	SM1901	n/a	Peace Knowe,fort	N
Scheduled Monument	SM2207	n/a	Bowhouse,circular enclosure,Polmont	N
Scheduled Monument	SM2250	n/a	Antonine Wall, Deanfield, Roman temporary camp and annexe 160m NNE of	N
Scheduled Monument	SM2592	n/a	Myrehead,windmill	N
Scheduled Monument	SM2654	n/a	Wilsontown Ironworks	N
Scheduled Monument	SM3206	n/a	Antonine Wall, The Bungalow, Roman camp 380m W of	N
Scheduled Monument	SM3209	n/a	Antonine Wall, fort and shell middens 240m WSW of The Tower, Inveravon	N
Scheduled Monument	SM5282	n/a	Woodhall House,800m W of Woodhall Cottage	N

Type	HES Reference	Category	Name	In ZTV?
Scheduled Monument	SM5426	n/a	Antonine Wall,350m SSE of Inchyra Grange Hotel	N
Scheduled Monument	SM5646	n/a	Avondale House,palisaded enclosure 630m S of	N
Scheduled Monument	SM5860	n/a	Newparks,lime kilns 120m NNE of	N
Scheduled Monument	SM6207	n/a	South Mains,homestead moat 200m N of	N
Scheduled Monument	SM6208	n/a	Broomy Knowes, cairn S of	N
Scheduled Monument	SM6416	n/a	Mumrills, enclosure 250m E of	N
Scheduled Monument	SM6542	n/a	Station House, Roman temporary camp 200m SE of	N
Scheduled Monument	SM6768	n/a	Forth and Clyde Canal: Castlecary - M9 Motorway	N
Scheduled Monument	SM6919	n/a	Lathallan, palisaded enclosure 150m N of	N
Scheduled Monument	SM7279	n/a	Easter Gormyre, refuge stone, 475m ENE of	N
Scheduled Monument	SM8244	n/a	Antonine Wall, Rough Castle to Lime Road, and field system	N
Scheduled Monument	SM8251	n/a	Antonine Wall, Lime Road to Tamfourhill	N
Scheduled Monument	SM8453	n/a	Antonine Wall, Watling Lodge fortlet, Tamfourhill, Falkirk	N
Scheduled Monument	SM8828	n/a	Antonine Wall, 170m NNW to 305m NE of Falkirk High School	N
Scheduled Monument	SM8829	n/a	Antonine Wall, Callendar Park, Falkirk	N
Scheduled Monument	SM8832	n/a	Antonine Wall and Mumrills fort, Sandy Loan to A905, Falkirk	N
Scheduled Monument	SM8954	n/a	Union Canal, River Almond to River Avon	N
Scheduled Monument	SM90013	n/a	Antonine Wall, Rough Castle fort, annexe and Military Way	N
Scheduled Monument	SM90016	n/a	Antonine Wall, W and E of Watling Lodge, Tamfourhill	N
Scheduled Monument	SM9679	n/a	Brewshott, limestone quarry	N
Scheduled Monument	SM9684	n/a	Haywood, deserted mining village	N
Scheduled Monument	SM9700	n/a	Tashieburn, horse engine platform 50m NE of	N
Scheduled Monument	SM9721	n/a	Antonine Wall, 75m ESE of Craigellachie	N

Type	HES Reference	Category	Name	In ZTV?
Scheduled Monument	SM9728	n/a	Antonine Wall, Millhall Burn to River Avon	N
Conservation Area	CA378	n/a	Linlithgow Palace And High Street	N
Conservation Area	CA379	n/a	Linlithgow - Upper Linlithgow And Union Canal	N
Conservation Area	CA377	n/a	Bangour Village	N
Conservation Area	CA383	n/a	Victoria And Town Centre	N
Conservation Area	CA386	n/a	Blairhill And Dunbeth	N
Conservation Area	CA549	n/a	Falkirk Town Centre	N
Conservation Area	CA552	n/a	Arnothill And Dollar Park	N
Listed Building	LB7468	A	Union Canal, Avon Aqueduct	N
Listed Building	LB8301	A	Parkhill	N
Listed Building	LB8315	A	Falkirk, Redding, Dovecot Road, Westquarter Dovecot	N
Listed Building	LB12983	A	Linlithgow, Preston Road, Preston House	N
Listed Building	LB12985	A	Linlithgow, River Avon, Avon Viaduct	N
Listed Building	LB12989	A	Woodcockdale, Union Canal, Cottages And Stables	N
Listed Building	LB15321	A	Union Canal, Avon Aqueduct	N
Listed Building	LB15326	A	Westfield, River Avon, Avon Viaduct	N
Listed Building	LB31167	A	Falkirk, High Street, Falkirk Old Parish Church	N
Listed Building	LB31178	A	Falkirk, High Street, Town Steeple	N
Listed Building	LB31236	A	Falkirk, Callendar Park, Callendar House	N
Listed Building	LB31241	A	Falkirk, Callendar Park, Callendar House, Mausoleum	N
Listed Building	LB37362	A	Linlithgow, The Cross, Town House	N
Listed Building	LB37363	A	Linlithgow, 5 The Cross, Cross House	N
Listed Building	LB37383	A	Linlithgow, High Street, St Michael'S Well	N

Type	HES Reference	Category	Name	In ZTV?
Listed Building	LB37430	A	Linlithgow, 297-299 High Street, West Port House	N
Listed Building	LB37438	A	Linlithgow 42, 44 High Street	N
Listed Building	LB37439	A	Linlithgow, 46-48 High Street	N
Listed Building	LB37468	A	Linlithgow, Learmonth Gardens, Dovecot	N
Listed Building	LB37470	A	Linlithgow Palace, Gateway	N
Listed Building	LB37499	A	Linlithgow, St Michael'S Church	N
Listed Building	LB51902	A	Bangour Village Hospital, Former Memorial Church	N
Listed Building	LB51903	A	Bangour Village Hospital, Former Recreation Hall	N
Listed Building	LB707	B	Auchengray Church	N
Listed Building	LB710	B	Cleugh House	N
Listed Building	LB742	B	Carluke, St Luke'S Church, Churchyard	N
Listed Building	LB4132	B	Linlithgow, River Avon, Avonbank Viaduct	N
Listed Building	LB6459	B	Carluke, Boghall Road, Birkfield	N
Listed Building	LB6465	B	Motherwell, Forgewood, Jerviston Railway Viaduct	N
Listed Building	LB6588	B	Bangour Village Hospital, Administration Block	N
Listed Building	LB7415	B	Livingston, Old Toll House	N
Listed Building	LB7416	B	Knightsridge	N
Listed Building	LB7421	B	Livingston Village, Millfield, Livingston Mill Farm	N
Listed Building	LB7469	B	Belsyde House	N
Listed Building	LB7476	B	Cauldhame Farm	N
Listed Building	LB7480	B	Union Canal, Bridge No. 47	N
Listed Building	LB7481	B	Easter Carribber	N
Listed Building	LB7483	B	Linlithgow, Longcroft Gardens, Longcroft House	N

Type	HES Reference	Category	Name	In ZTV?
Listed Building	LB8299	B	Kenneil House	N
Listed Building	LB8302	B	Parkhill, Dovecot	N
Listed Building	LB8303	B	Parkhill, West Lodge And Gate Piers	N
Listed Building	LB8305	B	Polmont, Bo'Ness Road, Polmont North Parish Church	N
Listed Building	LB8306	B	Avondale House	N
Listed Building	LB8307	B	Avondale House, Stables	N
Listed Building	LB8308	B	Avondale House, Folly	N
Listed Building	LB10521	B	Bantaskine Estate, Obelisk	N
Listed Building	LB10522	B	Union Canal, Bridge No. 61	N
Listed Building	LB10523	B	Craigieburn	N
Listed Building	LB12876	B	Laurieston, 1 Polmont Road, Hawthorn Cottage	N
Listed Building	LB12975	B	Hiltly	N
Listed Building	LB12976	B	Linlithgow Bridge, 6 Main Street, Chalmers Cottages	N
Listed Building	LB12977	B	Linlithgow Bridge, Main Street, Chalmers Hall	N
Listed Building	LB12984	B	Linlithgow, Preston Road, Preston House, Lodge	N
Listed Building	LB12986	B	Wairdlaw, Lime Workings	N
Listed Building	LB12987	B	Williamcraigs House	N
Listed Building	LB12988	B	Union Canal, Bridge No. 48	N
Listed Building	LB13326	B	Lochgreen Farmhouse	N
Listed Building	LB13404	B	Laurieston, 2 Polmont Road, Laurieston House	N
Listed Building	LB13648	B	Auchenhard Tower	N
Listed Building	LB13848	B	Manuel Nunnery	N
Listed Building	LB14161	B	Livingston Village, River Almond, Livingston Bridge	N

Type	HES Reference	Category	Name	In ZTV?
Listed Building	LB14187	B	Murdostoun Castle	N
Listed Building	LB14188	B	Murdostoun Castle, Dovecot	N
Listed Building	LB14189	B	Murdostoun Castle, Wellhead	N
Listed Building	LB14204	B	New Monkland, Parish Church, Watch House	N
Listed Building	LB14205	B	Rochsoles, Stable Block	N
Listed Building	LB14215	B	Harburn House	N
Listed Building	LB14217	B	Harburn House, Stables	N
Listed Building	LB14218	B	Harburn House, Dovecot	N
Listed Building	LB14551	B	Bridge Castle	N
Listed Building	LB14555	B	Bowdenhill Limeworks	N
Listed Building	LB14556	B	Westfield, River Avon, Avon Viaduct	N
Listed Building	LB15311	B	Slamannan, Main Street, Slamannan Parish Church	N
Listed Building	LB15312	B	Pirnie Lodge	N
Listed Building	LB15313	B	Muiravonside Parish Church	N
Listed Building	LB15314	B	Almond Castle	N
Listed Building	LB15315	B	The Haining	N
Listed Building	LB15320	B	Manuel Mill	N
Listed Building	LB15322	B	Muiravonside House, Dovecot	N
Listed Building	LB15323	B	Candiehead, Candie House	N
Listed Building	LB15328	B	Westfield, River Avon, Avon Viaduct	N
Listed Building	LB15329	B	Linlithgow, River Avon, Avonbank Viaduct	N
Listed Building	LB18230	B	Easter Moffat House	N
Listed Building	LB18439	B	Calder Bridge	N

Type	HES Reference	Category	Name	In ZTV?
Listed Building	LB18440	B	Murdostoun Castle, West Lodge	N
Listed Building	LB18833	B	Murieston House, Murieston Water, Bridge	N
Listed Building	LB18914	B	High Palacecraig House	N
Listed Building	LB19204	B	Vellore House	N
Listed Building	LB19251	B	Glenmvavis, Yetts Hole Road, Braidenhill Farmhouse	N
Listed Building	LB19264	B	Manuel Mill, Corn Mill	N
Listed Building	LB19659	B	Chapelhall, Russell Street, Chapelhall Parish Church	N
Listed Building	LB19676	B	New Monkland, Condorrat Road, Parish Church	N
Listed Building	LB20921	B	Airdrie, Wellwynd, West Parish Church of Scotland	N
Listed Building	LB20922	B	Airdrie, Bell Street, Methodist Church	N
Listed Building	LB20924	B	Airdrie, Hallcraig Street, St Margaret'S Roman Catholic Church	N
Listed Building	LB20926	B	Airdrie, 8 Bank Street, Town Clerk'S Office	N
Listed Building	LB20927	B	Airdrie, 6 Dornoch Way	N
Listed Building	LB20930	B	Clarkston, Wester Moffat House	N
Listed Building	LB20932	B	Airdrie, 84 Johnston Street, Flowerhill Parish Church	N
Listed Building	LB20935	B	Airdrie, Anderson Street, Airdrie Arts Centre	N
Listed Building	LB20936	B	Airdrie, 2, 4, 6, 8, 8A Bank Street	N
Listed Building	LB20937	B	Airdrie, 10 Bank Street, Royal Bank Of Scotland	N
Listed Building	LB20939	B	Airdrie, Chapel Street, Regional Council Office	N
Listed Building	LB20940	B	Airdrie, 5 Graham Street	N
Listed Building	LB20944	B	Airdrie, 16 And 18 North Bridge Street	N
Listed Building	LB20947	B	Airdrie, Stirling Street, Sir John Wilson Town Hall	N
Listed Building	LB20948	B	Airdrie, 11 - 15 Stirling Street	N

Type	HES Reference	Category	Name	In ZTV?
Listed Building	LB20949	B	Airdrie, Stirling Street, Airdrie Savings Bank	N
Listed Building	LB20951	B	Airdrie, 24 Victoria Place, The Red House	N
Listed Building	LB23021	B	Coatbridge, 357 Main Street, Monkland District Magistrates Court	N
Listed Building	LB31168	B	Falkirk, High Street, Falkirk Old Parish Church, Churchyard	N
Listed Building	LB31169	B	Falkirk, High Street, Falkirk Old Parish Church, Churchyard Gate	N
Listed Building	LB31170	B	Falkirk, 2 High Street, The Royal Bank Of Scotland	N
Listed Building	LB31173	B	Falkirk, 25-29 Manor Street	N
Listed Building	LB31174	B	Falkirk, 100 High Street	N
Listed Building	LB31175	B	Falkirk, 102-104 High Street	N
Listed Building	LB31176	B	Falkirk, 106-112 High Street	N
Listed Building	LB31177	B	Falkirk, High Street, Cross Well	N
Listed Building	LB31180	B	Falkirk, 124-128 High Street	N
Listed Building	LB31183	B	Falkirk, 138-140 And 140A High Street, Halifax Building Society	N
Listed Building	LB31184	B	Falkirk, 142-148High Street	N
Listed Building	LB31185	B	Falkirk, 150- 156 High Street	N
Listed Building	LB31187	B	Falkirk, 113-117 High Street	N
Listed Building	LB31190	B	Falkirk, 129, 131 High Street, 1-7 Kings Court	N
Listed Building	LB31192	B	Falkirk, 147-149 High Street	N
Listed Building	LB31195	B	Falkirk, Kings Court, Offices	N
Listed Building	LB31196	B	Falkirk, 20-24 High Street, Newmarket Street, A And A Anderson And Son	N
Listed Building	LB31197	B	Falkirk, 5-15 Lint Riggs, Masonic Hall, 32-34 High Street, Newmarket Street, The Goose On Newmarket	N
Listed Building	LB31198	B	Falkirk, West Bridge Street, West United Free Church	N
Listed Building	LB31200	B	Falkirk, 1 Hope Street, Sheriff Court House	N

Type	HES Reference	Category	Name	In ZTV?
Listed Building	LB31201	B	Falkirk, Hope Street, Falkirk Public Library	N
Listed Building	LB31202	B	Falkirk, 9 Hope Street	N
Listed Building	LB31204	B	Falkirk, Newmarket Street, Wellington Statue	N
Listed Building	LB31206	B	Falkirk, 25-29 Newmarket Street, Royal Bank Buildings	N
Listed Building	LB31211	B	Falkirk, 39-43 Vicar Street, Bank of Scotland	N
Listed Building	LB31212	B	Falkirk, 45-47 Vicar Street	N
Listed Building	LB31214	B	Falkirk, 2 Kerse Lane, Orchard Hotel	N
Listed Building	LB31216	B	Falkirk, Cow Wynd, The Tattie Kirk	N
Listed Building	LB31220	B	Falkirk, Cochrane Avenue, St Modan's Church	N
Listed Building	LB31221	B	Falkirk, Arnothill Lane, The Hatherley	N
Listed Building	LB31222	B	Falkirk, 7 Maggie Wood'S Loan, Mayfield	N
Listed Building	LB31223	B	Falkirk, 17 Arnothill, Nursing Home	N
Listed Building	LB31224	B	Falkirk, Camelon Road, Arnotdale	N
Listed Building	LB31225	B	Falkirk, Kilns Road, Kilns House	N
Listed Building	LB31228	B	Falkirk, 58-60 Grahams Road	N
Listed Building	LB31231	B	Falkirk, Bute Road, Grahamston United Church	N
Listed Building	LB31233	B	Falkirk, Tamfourhill, Port Downie, Union Inn	N
Listed Building	LB31235	B	Falkirk, Callendar Park, Callendar House, Glenbrae Lodge	N
Listed Building	LB31237	B	Falkirk, Callendar Park, Callendar House, Footbridge	N
Listed Building	LB31238	B	Falkirk, Callendar Park, Callendar House, Sundials	N
Listed Building	LB31239	B	Falkirk, Callendar Park, Callendar House, Stable Court and Cobbled Yard	N
Listed Building	LB31242	B	Falkirk, Union Canal, Canal Tunnel	N
Listed Building	LB31243	B	Union Canal, Bridge No. 62	N

Type	HES Reference	Category	Name	In ZTV?
Listed Building	LB31251	B	Falkirk, Slamannan Road, Lochgreen Hospital & Gatepiers	N
Listed Building	LB31253	B	Falkirk, Thornhill Road, St James' Church	N
Listed Building	LB37354	B	Linlithgow, Union Canal, Back Station Road Aqueduct	N
Listed Building	LB37355	B	Linlithgow, Ashley Hall Gardens, Ashley Hall	N
Listed Building	LB37361	B	Linlithgow, Union Canal, Bridge No. 46, Footbridge	N
Listed Building	LB37367	B	Linlithgow, The Cross, Cross Well	N
Listed Building	LB37373	B	Linlithgow, Falkirk Road, St Ninian's Church	N
Listed Building	LB37375	B	Linlithgow, Friars Brae, Douglas Cottage	N
Listed Building	LB37376	B	Linlithgow, Union Canal, Bridge No. 44	N
Listed Building	LB37377	B	Linlithgow, Friars Brae, Rivaldsgreen	N
Listed Building	LB37379	B	Linlithgow, Friars Brae, Rosemount	N
Listed Building	LB37380	B	Linlithgow, Friars Brae, Victoria Place	N
Listed Building	LB37381	B	Linlithgow, 1 High Street, Star and Garter Hotel	N
Listed Building	LB37382	B	Linlithgow, 9-21 High Street	N
Listed Building	LB37385	B	Linlithgow, 29-31 High Street, Post Office	N
Listed Building	LB37387	B	Linlithgow, 39-41 High Street	N
Listed Building	LB37388	B	Linlithgow, 43-47 High Street	N
Listed Building	LB37389	B	Linlithgow, 49-51 High Street	N
Listed Building	LB37390	B	Linlithgow, 53-55 High Street, Royal Bank of Scotland	N
Listed Building	LB37393	B	Linlithgow, 63 High Street	N
Listed Building	LB37398	B	Linlithgow, 89-91 High Street, Criminal Justice Office	N
Listed Building	LB37399	B	Linlithgow, High Street, County Buildings	N
Listed Building	LB37400	B	Linlithgow, High Street, Sheriff Court	N

Type	HES Reference	Category	Name	In ZTV?
Listed Building	LB37406	B	Linlithgow, 123, 125, 127 High Street, Shoemaker's Land	N
Listed Building	LB37407	B	Linlithgow, 129 High Street	N
Listed Building	LB37408	B	Linlithgow, 131-135 High Street	N
Listed Building	LB37410	B	Linlithgow, 143 High Street, Museum	N
Listed Building	LB37414	B	Linlithgow, High Street, St Peter's Episcopal Church	N
Listed Building	LB37416	B	Linlithgow, 165 High Street	N
Listed Building	LB37419	B	Linlithgow, 177-179 High Street, The Crown Arms	N
Listed Building	LB37421	B	Linlithgow, 213-215 High Street	N
Listed Building	LB37424	B	Linlithgow, 257 - 259 High Street	N
Listed Building	LB37425	B	Linlithgow, 263A - 265 High Street	N
Listed Building	LB37428	B	Linlithgow, 275 High Street	N
Listed Building	LB37429	B	Linlithgow, 293 High Street	N
Listed Building	LB37431	B	Linlithgow, 303-325 High Street	N
Listed Building	LB37434	B	Linlithgow, 20 - 24 High Street	N
Listed Building	LB37436	B	Linlithgow, 30-34 High Street	N
Listed Building	LB37437	B	Linlithgow, 36-36A High Street	N
Listed Building	LB37440	B	Linlithgow, 50 High Street, Red Lion Inn	N
Listed Building	LB37441	B	Linlithgow, 52-54 High Street	N
Listed Building	LB37447	B	Linlithgow, 78-80 High Street	N
Listed Building	LB37453	B	Linlithgow, 212-214 High Street	N
Listed Building	LB37459	B	Linlithgow, 232-236 High Street	N
Listed Building	LB37463	B	Linlithgow, 1-2 Kirkgate	N
Listed Building	LB37464	B	Linlithgow, 3 Kirkgate	N

Type	HES Reference	Category	Name	In ZTV?
Listed Building	LB37465	B	Linlithgow, The Cross, District Court	N
Listed Building	LB37466	B	Linlithgow, Kirkgate, Rosegarden, Statue Of 1St Marquess of Linlithgow	N
Listed Building	LB37467	B	Linlithgow, Kirkgate Walls	N
Listed Building	LB37473	B	Linlithgow, 13 Lion Well Wynd	N
Listed Building	LB37474	B	Linlithgow, 17 Lion Well Wynd	N
Listed Building	LB37479	B	Linlithgow, Manse Road, Union Canal Museum	N
Listed Building	LB37480	B	Linlithgow, Manse Road, Canal House	N
Listed Building	LB37481	B	Linlithgow, 30 Manse Road, Clarendon House	N
Listed Building	LB37482	B	Linlithgow, Union Canal, Bridge No. 43	N
Listed Building	LB37483	B	Linlithgow, Manse Road, Friarbank	N
Listed Building	LB37484	B	Linlithgow, Manse Road, Glebe House	N
Listed Building	LB37485	B	Linlithgow, Manse Road, Nether Parkley	N
Listed Building	LB37486	B	Linlithgow, Manse Road, Nether Parkley, Lodge	N
Listed Building	LB37488	B	Linlithgow, 1-3 Preston Road	N
Listed Building	LB37489	B	Linlithgow, Preston Road, Poldrait	N
Listed Building	LB37492	B	Linlithgow, 6 Royal Terrace	N
Listed Building	LB37493	B	Linlithgow, 7-7A Royal Terrace	N
Listed Building	LB37494	B	Linlithgow, 8-9 Royal Terrace	N
Listed Building	LB37495	B	Linlithgow, 10-11 Royal Terrace	N
Listed Building	LB37497	B	Linlithgow, 14 Royal Terrace	N
Listed Building	LB37504	B	Linlithgow, Union Road, Lindisfarne	N
Listed Building	LB38242	B	Motherwell, Forgewood, Jerviston Railway Viaduct	N
Listed Building	LB43858	B	Shotts, Hartwood Hospital	N

Type	HES Reference	Category	Name	In ZTV?
Listed Building	LB44184	B	Falkirk, Camelon Road, Rosebank Distillery	N
Listed Building	LB45577	B	Wishaw, 6 West Thornlie Street, Thornlie Parish Church Manse	N
Listed Building	LB46544	B	Falkirk, Callendar Park, Callendar House, Stable Block, Implement Shed and Dovecot	N
Listed Building	LB46545	B	Falkirk, Callendar Park, Callendar House, Factor's House	N
Listed Building	LB46705	B	Luggiebank Bridge	N
Listed Building	LB47560	B	Linlithgow, 261 - 263 High Street	N
Listed Building	LB47936	B	Wishaw, 2-4 Belhaven Road, Bank	N
Listed Building	LB47949	B	Wishaw, 2 Kirk Road	N
Listed Building	LB48541	B	Airdrie, 16-28 Anderson Street	N
Listed Building	LB48556	B	Airdrie, North Biggar Road, Stanley Old College Gate	N
Listed Building	LB48559	B	Airdrie, 10, 12 Stirling Street	N
Listed Building	LB48560	B	Airdrie, 4-6 Victoria Place	N
Listed Building	LB48563	B	Airdrie, 54 Victoria Place, The Anchorage	N
Listed Building	LB48692	B	Falkirk, 52-58 Vicar Street	N
Listed Building	LB48694	B	Falkirk, 27 - 35 Vicar Street, Vicars Chambers	N
Listed Building	LB49409	B	Coatdyke, Centenary Avenue, Railway Viaduct	N
Listed Building	LB49523	B	Lathallan	N
Listed Building	LB49525	B	Lathallan, Walled Garden	N
Listed Building	LB49526	B	Lathallan, Power House	N
Listed Building	LB50158	B	Laurieston, Mumrills Road, Mumrills House	N
Listed Building	LB50159	B	Falkirk, Laurieston, Mumrills Road, Mumrills Farm	N
Listed Building	LB50225	B	Tamfourhill Road, Oakdene, Including Gatepiers and Gate	N
Listed Building	LB50226	B	Tamfourhill Road, Watling Lodge, And Stables Including Gatepiers and Garden Steps	N

Type	HES Reference	Category	Name	In ZTV?
Listed Building	LB50804	B	Glenavon House	N
Listed Building	LB51649	B	Hope Street, St Francis-Xavier Rc Church	N
Listed Building	LB51904	B	Bangour Village Hospital, Former Nurses Home	N
Listed Building	LB51905	B	Bangour Village Hospital, Former Hospital Block, with Wards 3, 4 And 5	N
Listed Building	LB709	C	Cleuch House	N
Listed Building	LB4146	C	Grangemouth, Inveravon Tower	N
Listed Building	LB5095	C	Craig Binning	N
Listed Building	LB6450	C	Allanton, Allanton Road, Brucefield Farm, Allanton Well	N
Listed Building	LB6460	C	Carluke, 35 Chapel Street	N
Listed Building	LB7474	C	Linlithgow Bridge, Burgh Mills Lane, Burgh Mills House	N
Listed Building	LB8316	C	Polmont, Bo'Ness Road, Old Church and Churchyard	N
Listed Building	LB13680	C	Polmont House, Lodge	N
Listed Building	LB14222	C	Polbeth, Limefield House, Bridge	N
Listed Building	LB14223	C	Bridge 2, Limefield Ken	N
Listed Building	LB14535	C	Torphichen, The Square, Jubilee Well	N
Listed Building	LB14536	C	Torphichen, The Square, North Side	N
Listed Building	LB14537	C	Torphichen, The Square, West Side	N
Listed Building	LB14538	C	Torphichen, 'Rose Cottage'	N
Listed Building	LB14547	C	Kipps	N
Listed Building	LB15319	C	Union Canal, Bridge No. 49	N
Listed Building	LB15324	C	Torphichen Bridge	N
Listed Building	LB15327	C	Compston	N
Listed Building	LB18229	C	Greystones Farm	N

Type	HES Reference	Category	Name	In ZTV?
Listed Building	LB18231	C	Greystones Farm	N
Listed Building	LB19253	C	Calderbank, Calderbank Parish Church	N
Listed Building	LB20923	C	Airdrie, Wellwynd, Wellwynd Church	N
Listed Building	LB20925	C	Airdrie, Clarkston Church	N
Listed Building	LB20929	C	Airdrie, 23-25 Wellwynd	N
Listed Building	LB20931	C	Airdrie, Springwells Avenue, St Paul's Episcopal Church and Hall	N
Listed Building	LB20934	C	Airdrie, 93, 95 High Street, The Lodge Bar	N
Listed Building	LB20938	C	Airdrie, 25 Broomknoll Street, Monklands District Council Housing Department	N
Listed Building	LB20941	C	Airdrie, 7 Graham Street	N
Listed Building	LB20943	C	Coatbridge, 1 Kippen Street, Rochsolloch Primary School	N
Listed Building	LB20946	C	Airdrie, 35 Quarry Road	N
Listed Building	LB20950	C	Airdrie, Wellwynd, Airdrie Public Library	N
Listed Building	LB23004	C	Coatbridge, Muiryhall Street East, Trinity Parish Church	N
Listed Building	LB23024	C	Coatbridge, 275 Muiryhall Street, Coatdyke Church	N
Listed Building	LB31171	C	Falkirk, 4-6 High Street, The Royal Hotel	N
Listed Building	LB31172	C	Falkirk, 86-88 High Street	N
Listed Building	LB31179	C	Falkirk, 122 High Street	N
Listed Building	LB31181	C	Falkirk, 130 High Street	N
Listed Building	LB31182	C	Falkirk, 131-136 High Street	N
Listed Building	LB31186	C	Falkirk, 105-111 High Street, Wilson's Buildings	N
Listed Building	LB31188	C	Falkirk, 119-121 High Street	N
Listed Building	LB31189	C	Falkirk, 123-127 High Street, Falkirk Herald Building	N
Listed Building	LB31191	C	Falkirk, High Street, Lloyds Tsb Scotland	N

Type	HES Reference	Category	Name	In ZTV?
Listed Building	LB31193	C	Falkirk, 151-155 High Street	N
Listed Building	LB31194	C	Falkirk, 157-161 High Street	N
Listed Building	LB31203	C	Falkirk, Newmarket Street, South African War Memorial	N
Listed Building	LB31205	C	Falkirk, Newmarket Street, St Andrew's Church and Halls	N
Listed Building	LB31207	C	Falkirk, Newmarket Street, Social Work Department	N
Listed Building	LB31208	C	Falkirk, 16-18 Newmarket Street, Christian Institute	N
Listed Building	LB31209	C	Falkirk, 22 - 28 Vicar Street, 32 - 34 Vicar Street, 38 Vicar Street, 10 – 12 Melville Street, 48 - 50 Newmarket Street	N
Listed Building	LB31210	C	Falkirk, 9-11 Vicar Street	N
Listed Building	LB31213	C	Falkirk, Princes Street, Community Education Centre	N
Listed Building	LB31215	C	Falkirk, Kerse Lane, Christ Church Episcopal Church	N
Listed Building	LB31217	C	Falkirk, 5 Booth Place	N
Listed Building	LB31218	C	Falkirk, 7 Booth Place	N
Listed Building	LB31219	C	Falkirk, Pleasance Gardens, Mount House	N
Listed Building	LB31234	C	Falkirk, Camelon, Glasgow Road, St John'S Parish Church	N
Listed Building	LB31240	C	Falkirk, Callendar Park, Callendar House, Dry Bridge	N
Listed Building	LB31244	C	Hallglen, Woodend Farm	N
Listed Building	LB31245	C	Forth And Clyde Canal, Lock 9, Cottage	N
Listed Building	LB31246	C	Forth And Clyde Canal, Lock 11, Cottage	N
Listed Building	LB31247	C	Falkirk, Canal Street, Canal Inn	N
Listed Building	LB31248	C	Falkirk, 24 Canal Street	N
Listed Building	LB37364	C	Linlithgow, 11 The Cross	N
Listed Building	LB37365	C	Linlithgow, 12 The Cross	N
Listed Building	LB37366	C	Linlithgow, 13-14 The Cross	N

Type	HES Reference	Category	Name	In ZTV?
Listed Building	LB37372	C	Linlithgow, Longcroft Garden, Longcroft House, Gate-Piers and Boundary Wall	N
Listed Building	LB37374	C	Linlithgow, Falkirk Road, Westerpark	N
Listed Building	LB37378	C	Linlithgow, Friars Brae, Rivaldsgreen, Coach House	N
Listed Building	LB37384	C	Linlithgow, 23 High Street	N
Listed Building	LB37386	C	Linlithgow, 33-37 High Street	N
Listed Building	LB37391	C	Linlithgow, 57 High Street	N
Listed Building	LB37392	C	Linlithgow, 59 - 61 High Street	N
Listed Building	LB37394	C	Linlithgow, 65, 67, 69 High Street, The Four Marys	N
Listed Building	LB37395	C	Linlithgow, 71 High Street	N
Listed Building	LB37396	C	Linlithgow, 73-75 High Street	N
Listed Building	LB37397	C	Linlithgow, 77-79 High Street	N
Listed Building	LB37401	C	Linlithgow, High Street, Police Station	N
Listed Building	LB37402	C	Linlithgow, 103-105 High Street	N
Listed Building	LB37403	C	Linlithgow, 107-109 High Street	N
Listed Building	LB37404	C	Linlithgow, 111-113 High Street, Football and Cricketers Arms	N
Listed Building	LB37405	C	Linlithgow, 115 High Street, Football and Cricketers Arms	N
Listed Building	LB37409	C	Linlithgow, 139 High Street	N
Listed Building	LB37409	C	Linlithgow, 137 High Street	N
Listed Building	LB37411	C	Linlithgow, 145 High Street	N
Listed Building	LB37412	C	Linlithgow, 147 High Street	N
Listed Building	LB37413	C	Linlithgow, 149 High Street	N
Listed Building	LB37415	C	Linlithgow, 161-163 High Street	N
Listed Building	LB37417	C	Linlithgow, 169-173 High Street	N

Type	HES Reference	Category	Name	In ZTV?
Listed Building	LB37418	C	Linlithgow, 175 High Street	N
Listed Building	LB37420	C	Linlithgow, 201-207 High Street	N
Listed Building	LB37422	C	Linlithgow, 217-221 High Street	N
Listed Building	LB37423	C	Linlithgow, High Street, New Well	N
Listed Building	LB37426	C	Linlithgow, 267-269 High Street	N
Listed Building	LB37427	C	Linlithgow, 271-273 High Street, The Portcullis	N
Listed Building	LB37432	C	Linlithgow, 2-4 High Street	N
Listed Building	LB37433	C	Linlithgow, 10 - 18 High Street	N
Listed Building	LB37435	C	Linlithgow, 26-28 High Street	N
Listed Building	LB37442	C	Linlithgow, 56-60 High Street	N
Listed Building	LB37443	C	Linlithgow, 62-64 High Street, Abbey National	N
Listed Building	LB37444	C	Linlithgow, 66-68 High Street, The Clydesdale Bank	N
Listed Building	LB37445	C	Linlithgow, 70-72 High Street	N
Listed Building	LB37446	C	Linlithgow, 74-76 High Street	N
Listed Building	LB37448	C	Linlithgow, 82-86 High Street	N
Listed Building	LB37449	C	Linlithgow, 96-98 High Street	N
Listed Building	LB37450	C	Linlithgow, 100 High Street	N
Listed Building	LB37451	C	Linlithgow, 102-104 High Street	N
Listed Building	LB37452	C	Linlithgow, 114 High Street	N
Listed Building	LB37455	C	Linlithgow, 216-218 High Street	N
Listed Building	LB37456	C	Linlithgow, 220 High Street	N
Listed Building	LB37457	C	Linlithgow, 222-224 High Street	N
Listed Building	LB37458	C	Linlithgow, High Street, Baird Hall	N

Type	HES Reference	Category	Name	In ZTV?
Listed Building	LB37460	C	Linlithgow, 238 High Street	N
Listed Building	LB37461	C	Linlithgow, 246-248 High Street, Public House	N
Listed Building	LB37462	C	Linlithgow, 258-260 High Street	N
Listed Building	LB37471	C	Linlithgow Palace, Lodge	N
Listed Building	LB37472	C	Linlithgow, High Port, Linlithgow Station	N
Listed Building	LB37475	C	Linlithgow, 19 Lion Well Wynd	N
Listed Building	LB37476	C	Linlithgow, 16 Lion Well Wynd	N
Listed Building	LB37477	C	Linlithgow, Lion Well Wynd, Walls	N
Listed Building	LB37478	C	Linlithgow, Mains Road, Mains Maltings, Eastern and Western Cottage, Malting Barn, Store and Kiln	N
Listed Building	LB37487	C	Linlithgow, 2 Market Lane, Masonic Lodge	N
Listed Building	LB37490	C	Linlithgow, 1 Royal Terrace	N
Listed Building	LB37491	C	Linlithgow, 2 Royal Terrace	N
Listed Building	LB37496	C	Linlithgow, 13 Royal Terrace	N
Listed Building	LB37498	C	Linlithgow, 20 Royal Terrace	N
Listed Building	LB37500	C	Linlithgow, St Michael's Wynd	N
Listed Building	LB37501	C	Linlithgow, 4-5 Strawberry Bank	N
Listed Building	LB37502	C	Linlithgow, 5 Union Road	N
Listed Building	LB37503	C	Linlithgow, 6 Union Road	N
Listed Building	LB37505	C	Linlithgow, Union Road, St John's Evangelical Church	N
Listed Building	LB37506	C	Linlithgow, 12-14 West Port, The Black Bitch Hotel	N
Listed Building	LB37507	C	Linlithgow, 26 West Port	N
Listed Building	LB38243	C	Motherwell Mill	N
Listed Building	LB46268	C	Linlithgow, Union Road, Railway Wall & Railway Bridge	N

Type	HES Reference	Category	Name	In ZTV?
Listed Building	LB47503	C	Wishaw, East Academy Street, Chambers Parish Church	N
Listed Building	LB47505	C	Wishaw, West Thornlie Street, Thornlie Parish Church	N
Listed Building	LB47563	C	Reddingmuirhead, Shieldhill Road, Reddingmuirhead Community Centre	N
Listed Building	LB47940	C	Wishaw, 2 Coltness Road	N
Listed Building	LB47941	C	Craigneuk, Shieldmuir Street, St Patrick's R.C. Church	N
Listed Building	LB47942	C	Wishaw House, Coach House	N
Listed Building	LB47953	C	Wishaw, 177-191 Main Street	N
Listed Building	LB47954	C	Wishaw, 243, 245, 255, 257 Main Street, 239, 241, 251, 253 Main Street, 277, 231 Main Street, 235, 237, 249 Main Street	N
Listed Building	LB47960	C	Wishaw, 325 North Dryburgh Road, Bellside Lodge	N
Listed Building	LB47961	C	Wishaw, Stewarton Street, Stewarton Park, Marker Post	N
Listed Building	LB47962	C	Wishaw, 5 Stewarton Street, Commercial Bank of Scotland	N
Listed Building	LB47964	C	Wishaw, 11 Walter Street	N
Listed Building	LB47976	C	Allanton Mill	N
Listed Building	LB48014	C	Wishaw, Calder Bridge	N
Listed Building	LB48540	C	Airdrie, 14 Anderson Street, Post Office	N
Listed Building	LB48543	C	Airdrie, 12-20 Bank Street	N
Listed Building	LB48544	C	Airdrie, Broomknoll Street, Broomknoll Parish Church	N
Listed Building	LB48545	C	Airdrie, Broomknoll Street, Ebenezer Congregational Church	N
Listed Building	LB48546	C	Airdrie, 8-16 Broomknoll Street	N
Listed Building	LB48547	C	Airdrie, 18-20 Broomknoll Street	N
Listed Building	LB48548	C	Airdrie, East High Street, Fruitfield House	N
Listed Building	LB48549	C	Airdrie, 2 East High Street	N
Listed Building	LB48550	C	Airdrie, 6-8 East High Street	N

Type	HES Reference	Category	Name	In ZTV?
Listed Building	LB48551	C	Airdrie, Graham Street, Baptist Church	N
Listed Building	LB48552	C	Airdrie, 10 Grahamshill Street, Annfield	N
Listed Building	LB48553	C	Airdrie, 8-10 Hallcraig Street, Airdrie Market Building	N
Listed Building	LB48554	C	Airdrie, Aitchison Street, War Memorial	N
Listed Building	LB48555	C	Airdrie, North Biggar Road, 2-3 Stanley Park	N
Listed Building	LB48557	C	Airdrie, 40 South Bridge Street	N
Listed Building	LB48558	C	Airdrie, 4 Anderson Street, 80, 82, 86 South Bridge	N
Listed Building	LB48561	C	Airdrie, 26 Victoria Place	N
Listed Building	LB48562	C	Airdrie, 31 Victoria Place, Flowerhill Manse	N
Listed Building	LB48688	C	Falkirk, 20 - 24 Newmarket Street	N
Listed Building	LB48689	C	Falkirk, 44 - 46 Newmarket Street	N
Listed Building	LB48690	C	Falkirk, 42-44 Vicar Street, Firkins Bar	N
Listed Building	LB48691	C	Falkirk, 46-50 Vicar Street	N
Listed Building	LB48693	C	Falkirk, 25 Vicar Street	N
Listed Building	LB49524	C	Lathallan, Stable, Cottage	N
Listed Building	LB49607	C	Chapelhall, St Aloysius Church, Presbytery, Chapelhall, Main Street, St Aloysius Church	N
Listed Building	LB49672	C	Hartwood, Hartwood Hospital, Nurses' Home	N
Listed Building	LB50051	C	Brightons, Main Road, Brightons Parish Church	N
Listed Building	LB50224	C	Callendar Park, Callendar House, Atrium House (Former Gardener's Cottage), Including Gatepiers	N
Listed Building	LB50493	C	New Stevenston, Clydesdale Street, Primary School Including Boundary Walls and Railings	N
Listed Building	LB50894	C	Callendar Park, Kennels	N
Listed Building	LB50896	C	Callendar Park, Policy Walls	N
Listed Building	LB50897	C	Callendar Park, Wellhead	N

Type	HES Reference	Category	Name	In ZTV?
Listed Building	LB51113	C	Hodge Street and Cockburn Street, Erskine Parish Church (Church of Scotland) Including Church Hall and Boundary Wall	N
Listed Building	LB51119	C	150-154 Grahams Road, The Star Inn	N
Listed Building	LB51542	C	102-104 Grahams Road, Former Oddfellows Hall	N
Listed Building	LB51579	C	1 Bank Street and Kirk Wynd, Former Co-Operative Department Store	N
Listed Building	LB51613	C	19 And 19A Arnothill, Arnothall, Including Former Stables, Boundary Walls, Railings and Gatepiers	N
Listed Building	LB51906	C	Bangour Village Hospital, Dormitory Block, (Villa 7)	N
Listed Building	LB51907	C	Bangour Village Hospital, Dormitory Block, (Villa 8)	N
Listed Building	LB51908	C	Bangour Village Hospital, Dormitory Block, (Villa 10)	N
Listed Building	LB51909	C	Bangour Village Hospital, Dormitory Block, (Villa 18)	N
Listed Building	LB51910	C	Bangour Village Hospital, Dormitory Block, (Villa 19)	N
Listed Building	LB51911	C	Bangour Village Hospital, Dormitory Block, (Villa 20)	N
Listed Building	LB51912	C	Bangour Village Hospital, Dormitory Block, (Villa 21)	N
Listed Building	LB51913	C	Bangour Village Hospital, Dormitory Block, (Villa 9)	N
Listed Building	LB51914	C	Bangour Village Hospital, Honeysuckle Cottage	N
Listed Building	LB51915	C	Bangour Village Hospital, Former Power Station Complex, Including Workshops and Chimney Stack	N

3 ASSETS SELECTED FOR SETTING APPRAISAL

A review was undertaken for all designated heritage assets between 5 and 15 km to identify heritage assets for inclusion in the consideration of changes to setting. Within the 5-15 km Study Area, there are 654 designated assets, including: two World Heritage Sites; two Registered Battlefields; two Gardens and Designed Landscapes (GDLs); 77 Scheduled Monuments; 561 Listed Buildings (including 28 Category A, 282 Category B, and 251 Category C); and ten regionally designated Conservation Areas.

The Zone of Theoretical Visibility of the turbines indicates that the greatest potential intervisibility between heritage assets and the Proposed Development is focused around the boundary of the Site, with the greatest potential for intervisibility generally within circa 5 km and extending to the north-east.

The final selection of heritage assets included in the assessment is based on the location within the ZTV or where views across an asset may include the Proposed Development with consideration for the contribution of long-distance views and distant landscape context to cultural significance. With 497 heritage assets scoped out of consideration, all remaining assets within the 5-15 km Study Area have been included for the setting appraisal. The final selection is detailed in Table 12.2.2 and includes 163 designated heritage assets consisting of two World Heritage Sites, one Battlefield site, one Garden and Designed Landscape, 33 Scheduled Monuments, 118 Listed Buildings (five Category A, 58 Category B, and 59 Category C), and three regionally designated Conservation Areas.

Table 12.2.2: Assets included in Setting Appraisal

Type	HES Reference	Grade	Asset Name	In ZTV	Distance from CSA	Group
World Heritage Site	WH1	n/a	Antonine Wall World Heritage Site Boundary	Y	14.5 km NE	Antonine Wall
World Heritage Site	WHB1	n/a	Antonine Wall World Heritage Site Buffer Zone	Y	14.5 km NE	Antonine Wall
Registered Battlefield	BF25	n/a	Linlithgow Bridge	Y	13 km NE	Battle of Linlithgow Bridge
Garden & Designated Landscape	GDL00208	n/a	Harburn House	Y	13.7 km SE	Harburn House
Conservation Area	CA382	n/a	Drumgelloch Conservation Area	Y	11.2 km W	Drumgelloch Conservation Area and Airdrie Suburbs
Conservation Area	CA371	n/a	Livingston Village	Y	12.7 km E	Livingston Village and surrounding rural landscape
Conservation Area	CA375	n/a	Torphichen	Y	8.5 km NE	Torphichen Conservation Area and surrounding environs
Scheduled Monument	SM3210	n/a	Antonine Wall, Inveravon, Roman camps 420m & 730m SE of	Y	14.5 km NE	Antonine Wall
Scheduled Monument	SM3211	n/a	Antonine Wall, Nether Kinneil-Inveravon, rampart & ditch	Y	14.5 km NE	Antonine Wall
Scheduled Monument	SM9675	n/a	Avonhead Colliery	Y	9.7 km NW	Avonhead Colliery
Scheduled Monument	SM9677	n/a	Avonhead Colliery, miners' row	Y	9.7 km NW	Avonhead Colliery
Scheduled Monument	SM1904	n/a	Bathgate Castle	Y	7.2 km E	Bathgate and rural environs
Scheduled Monument	SM5671	n/a	Kirkton, old parish church 400m ESE of Kirkton Mains, Bathgate	Y	7.2 km E	Bathgate and rural environs
Scheduled Monument	SM4329	n/a	Blackbraes, coke ovens, Muiravonside	Y	9.1 km N	Blackbraes
Scheduled Monument	SM9661	n/a	Mid Bracco, deserted farmstead	Y	5.3 km W	Bracco Medieval settlement

Type	HES Reference	Grade	Asset Name	In ZTV	Distance from CSA	Group
Scheduled Monument	SM9665	n/a	Drumfin, deserted settlement 200m W of	Y	5.3 km W	Bracco Medieval settlement
Scheduled Monument	SM90053	n/a	Cairnpapple Hill, prehistoric ceremonial complex	Y	9.9 km NE	Cairnpapple Hill Prehistoric Complex
Scheduled Monument	SM11225	n/a	Hilltop House, coal pit 250m NNW of	Y	9.0 km NE	Hilltop House
Scheduled Monument	SM9680	n/a	Lochend Pit No. 5 and bing, 650m SW of Lochend	Y	5.9 km NW	Lochend
Scheduled Monument	SM11224	n/a	Muckraw, building 200m ESE of	Y	5.7 km NE	Muckraw
Scheduled Monument	SM2570	n/a	Easter Manuel, cultivation terraces NNW of	Y	13.5 km NE	Myrehead
Scheduled Monument	SM6484	n/a	Myrehead, enclosure 750m NE of	Y	13.5 km NE	Myrehead
Scheduled Monument	SM4245	n/a	Duntilland Hill, cairn	Y	5.6 km W	Prehistoric Bracco
Scheduled Monument	SM9664	n/a	Mid Bracco, hut circles 350m W of	Y	5.6 km W	Prehistoric Bracco
Scheduled Monument	SM11242	n/a	Castlethorn, fort and standing stones 500m ESE of Torphichen Mains	Y	11.6 km NE	Prehistoric Torphichen
Scheduled Monument	SM2283	n/a	Bowden Hillfort, Linlithgow	Y	11.6 km NE	Prehistoric Torphichen
Scheduled Monument	SM2378	n/a	Cockleroy, fort	Y	11.6 km NE	Prehistoric Torphichen
Scheduled Monument	SM6184	n/a	Gala Braes, standing stone	Y	11.6 km NE	Prehistoric Torphichen
Scheduled Monument	SM7571	n/a	Raven Craig, cairn	Y	11.6 km NE	Prehistoric Torphichen
Scheduled Monument	SM1207	n/a	Murieston Castle	Y	12.7 km E	Livingston Village and surrounding rural
Scheduled Monument	SM9666	n/a	Thieves Hill, deserted settlement 400m E of	Y	10.3 km NW	Thieves Hill
Scheduled Monument	SM1902	n/a	Craigmailing, cross slab 550m NW of	Y	8.5 km NE	Torphichen Conservation Area and surrounding environs
Scheduled Monument	SM1903	n/a	Torphichen Preceptory, refuge stone at Torphichen Kirk	Y	8.5 km NE	Torphichen Conservation Area and surrounding environs

Type	HES Reference	Grade	Asset Name	In ZTV	Distance from CSA	Group
Scheduled Monument	SM7280	n/a	Refuge Stone, 300m WNW of Westfield Farm, Westfield	Y	8.5 km NE	Torpichen Conservation Area and surrounding environs
Scheduled Monument	SM90305	n/a	Torpichen Preceptory	Y	8.5 km NE	Torpichen Conservation Area and surrounding environs
Scheduled Monument	SM8952	n/a	Union Canal, River Avon to Greenbank	Y	10.8 km NE	Union Canal
Scheduled Monument	SM7254	n/a	Old West Calder Church, West Calder	Y	10.9 km SE	West Calder and Addiewell
Scheduled Monument	SM11210	n/a	West Harwood, burial mound 720m SSE of	Y	11.9 km SE	West Harwood
Scheduled Monument	SM11227	n/a	Woodmuir Farm, coke ovens and reservoir 600m SSE of	Y	9.6 km SE	West Lothian Industrial Sites
Scheduled Monument	SM6254	n/a	Five Sisters, shale bing SE of Mid Breich	Y	9.6 km SE	West Lothian Industrial Sites
Listed Building	LB22125	A	Bathgate Academy	Y	7.2 km E	Bathgate and rural environs
Listed Building	LB7419	A	Blackburn House	Y	8.1 km E	Blackburn
Listed Building	LB14557	A	Gowan Bank Farmhouse, Steading and Cottage	Y	5.1 km NE	Gowanbank
Listed Building	LB47975	A	Wishaw, Young Street, St Ignatius Roman Catholic Church Including Boundary Wall and Gate Pier	Y	12.9 km SW	Suburban Motherwell Listed Buildings
Listed Building	LB726	A	High Mill Chapel Street	Y	12.9 km SW	Carluke
Listed Building	LB20928	B	Arran Drive, Commonhead, Street, Arranview Including Gatepiers	Y	11.2 km W	Drumgelloch Conservation Area and Airdrie Suburbs
Listed Building	LB671	B	Auchterhead Muir, Covenanters Monument, Darnead-Lin	Y	9.2 km S	Auchterhead Muir
Listed Building	LB22128	B	George Street, St David'S Church (Church of Scotland) With Bell Tower, Church Halls And Boundary Walls	Y	7.2 km E	Bathgate and rural environs

Type	HES Reference	Grade	Asset Name	In ZTV	Distance from CSA	Group
Listed Building	LB22129	B	Jarvey Street, High Church of Scotland With Graveyard, Boundary Walls, Railings And Gatepiers	Y	7.2 km E	Bathgate and rural environs
Listed Building	LB45918	B	24-34 (Even Nos) North Bridge Street, The Regal Community Theatre (Former Regal Cinema)	Y	7.2 km E	Bathgate and rural environs
Listed Building	LB6713	B	Easter Inch Farmhouse and Steading	Y	7.2 km E	Bathgate and rural environs
Listed Building	LB14202	B	Blackburn Village, Bridge, River Almond.	Y	8.1 km E	Blackburn
Listed Building	LB7420	B	Blackburn Village Bridge, River Almond	Y	8.1 km E	Blackburn
Listed Building	LB1073	B	Fannyside Mill	Y	11.6 km NW	Fannyside
Listed Building	LB18984	B	Fauldhouse, Crofthead Primary School, Sheephousehill	Y	5.1 km SE	Fauldhouse
Listed Building	LB14216	B	Charles X Monument, Harburn Policies	Y	13.7 km SE	Harburn House
Listed Building	LB19392	B	Manuel House	Y	11.7 km NE	Manuel House
Listed Building	LB14134	B	Murieston House, Easter Murieston	Y	12.7 km E	Livingston Village and surrounding rural
Listed Building	LB14160	B	Brucefield Farmhouse and Steading	Y	12.7 km E	Livingston Village and surrounding rural
Listed Building	LB14162	B	Howden House	Y	12.7 km E	Livingston Village and surrounding rural
Listed Building	LB14221	B	Limefield House	Y	12.7 km E	Livingston Village and surrounding rural
Listed Building	LB14224	B	Gavieside Farm-House	Y	12.7 km E	Livingston Village and surrounding rural
Listed Building	LB18442	B	Westfield House	Y	12.7 km E	Livingston Village and surrounding rural
Listed Building	LB18443	B	Alderston House, With Offices	Y	12.7 km E	Livingston Village and surrounding rural
Listed Building	LB18444	B	Alderston Park, Doocot	Y	12.7 km E	Livingston Village and surrounding rural

Type	HES Reference	Grade	Asset Name	In ZTV	Distance from CSA	Group
Listed Building	LB7409	B	Livingston Village, Livingston Parish Kirk.	Y	12.7 km E	Livingston Village and surrounding rural landscape
Listed Building	LB7410	B	Livingston Manse	Y	12.7 km E	Livingston Village and surrounding rural landscape
Listed Building	LB7413	B	Livingston Inn	Y	12.7 km E	Livingston Village and surrounding rural
Listed Building	LB7414	B	Livingston Bridge, River Almond	Y	12.7 km E	Livingston Village and surrounding rural
Listed Building	LB7417	B	Moss Houses	Y	12.7 km E	Livingston Village and surrounding rural
Listed Building	LB7418	B	Newyearfield Farmhouse and Steading	Y	12.7 km E	Livingston Village and surrounding rural
Listed Building	LB38236	B	Cambusnethan, Kirk Road, Former Parish Church Including Boundary Wall and Cemetery (Church Of Scotland)	Y	12.9 km SW	Suburban Motherwell Listed Buildings
Listed Building	LB47346	B	Wishaw, 9-35 (Odd Nos) Banchory Road, The Coach House	Y	12.9 km SW	Suburban Motherwell Listed Buildings
Listed Building	LB47504	B	Wishaw, Main Street, Wishaw Old Parish Church (Church Of Scotland)	Y	12.9 km SW	Suburban Motherwell Listed Buildings
Listed Building	LB47939	B	Wishaw, 47 Clelland Road, Including Boundary Wall	Y	12.9 km SW	Suburban Motherwell Listed Buildings
Listed Building	LB47952	B	Wishaw, 155-175 (Odd Nos) Main Street And 1-11 (Odd Nos) Belhaven Terrace, Richmond Place	Y	12.9 km SW	Suburban Motherwell Listed Buildings
Listed Building	LB47959	B	Wishaw, Main Street and Kenilworth Avenue Former Coltness Gatehouse	Y	12.9 km SW	Suburban Motherwell Listed Buildings
Listed Building	LB47979	B	Bonkle, Church Road, Bonkle Parish Church (Church of Scotland) Including Church Hall And Gatepiers	Y	12.9 km SW	Suburban Motherwell Listed Buildings

Type	HES Reference	Grade	Asset Name	In ZTV	Distance from CSA	Group
Listed Building	LB47982	B	Newmains, Manse Road, Newmains Police Station Including Boundary Wall and Railings	Y	12.9 km SW	Suburban Motherwell Listed Buildings
Listed Building	LB6664	B	1 And 2 Buchan Road, Carfin, Timber Bungalows	Y	12.9 km SW	Suburban Motherwell Listed Buildings
Listed Building	LB673	B	Newmains, Church Avenue, Coltness Memorial Church (Church of Scotland)	Y	12.9 km SW	Suburban Motherwell Listed Buildings
Listed Building	LB741	B	St Andrew's Parish Church, Mount Stewart Street	Y	12.9 km SW	Carluke
Listed Building	LB14533	B	Torphichen Kirk	Y	8.5 km NE	Torphichen Conservation Area and surrounding environs
Listed Building	LB14534	B	Gate-House, Torphichen Kirkyard	Y	8.5 km NE	Torphichen Conservation Area and surrounding environs
Listed Building	LB14540	B	'Viewforth' High Brae	Y	8.5 km NE	Torphichen Conservation Area and surrounding environs
Listed Building	LB14541	B	Sundial	Y	8.5 km NE	Torphichen Conservation Area and surrounding environs
Listed Building	LB14549	B	Dooct Wallhouse Policies	Y	8.5 km NE	Torphichen Conservation Area and surrounding environs
Listed Building	LB14589	B	Cathlaw House	Y	8.5 km NE	Torphichen Conservation Area and surrounding environs
Listed Building	LB19704	B	Wallhouse	Y	8.5 km NE	Torphichen Conservation Area and surrounding environs
Listed Building	LB14209	B	Loganlea House	Y	10.9 km SE	West Calder and Addiewell

Type	HES Reference	Grade	Asset Name	In ZTV	Distance from CSA	Group
Listed Building	LB14210	B	West Calder 13-19 (Odd Nos) Main Street, Former West Calder Co-Op	Y	10.9 km SE	West Calder and Addiewell
Listed Building	LB14211	B	West Calder East End, Library	Y	10.9 km SE	West Calder and Addiewell
Listed Building	LB14213	B	Harwood Farm-House	Y	10.9 km SE	West Calder and Addiewell
Listed Building	LB14219	B	Hermand House	Y	10.9 km SE	West Calder and Addiewell
Listed Building	LB14220	B	Hermand Coach-House and Stables	Y	10.9 km SE	West Calder and Addiewell
Listed Building	LB19677	B	West Calder Station, Including Cast-Iron Footbridge To E	Y	10.9 km SE	West Calder and Addiewell
Listed Building	LB49089	B	Auchenhard House Including Summerhouse and Gatepiers	Y	10.9 km SE	West Calder and Addiewell
Listed Building	LB49185	B	Auchenhard Farmhouse Including Boundary Wall and Gatepiers	Y	10.9 km SE	West Calder and Addiewell
Listed Building	LB20933	C	Motherwell Street, Rawyards House	Y	11.2 km W	Drumgelloch Conservation Area and Airdrie Suburbs
Listed Building	LB22126	C	22 Livery Street Including Outbuildings to Rear	Y	7.2 km E	Bathgate and rural environs
Listed Building	LB22127	C	9, 11 Mansefield Street	Y	7.2 km E	Bathgate and rural environs
Listed Building	LB50544	C	Livery Street, Church of The Immaculate Conception (St Mary's) (Roman Catholic), Including Boundary Walls, Gatepiers and Railings	Y	7.2 km E	Bathgate and rural environs
Listed Building	LB50608	C	Marjoribanks Street, Evangelical Union Congregational / United Reformed Church Including Halls, Boundary Walls and Gatepiers	Y	7.2 km E	Bathgate and rural environs
Listed Building	LB51105	C	19, 21 George Place, Pavilion Bingo (Former Pavilion Cinema)	Y	7.2 km E	Bathgate and rural environs

Type	HES Reference	Grade	Asset Name	In ZTV	Distance from CSA	Group
Listed Building	LB1072	C	Fannyside Toll	Y	11.6 km NW	Fannyside
Listed Building	LB14206	C	Auchingray	Y	5.1 km W	Caldercruix and environs
Listed Building	LB19254	C	Caldercruix, Main Street, Longriggend and Meadowfield Church Including Gatepiers and Boundary Wall	Y	7.7 km W	Caldercruix and environs
Listed Building	LB14135	C	Skivo Farm (Skivo Kennels)	Y	12.7 km E	Livingston Village and surrounding rural
Listed Building	LB14143	C	Newpark House	Y	12.7 km E	Livingston Village and surrounding rural
Listed Building	LB44584	C	Bellsquarry, 30 Calder Road with Boundary Walls	Y	12.7 km E	Livingston Village and surrounding rural
Listed Building	LB7405	C	Morven And Adjoining Heather Cottage 19 And 21 Main Street	Y	12.7 km E	Livingston Village and surrounding rural landscape
Listed Building	LB7406	C	Almond Bank (J H Shields) With Sub Post Office, Main Street	Y	12.7 km E	Livingston Village and surrounding rural landscape
Listed Building	LB7407	C	Bezu 11 Main Street	Y	12.7 km E	Livingston Village and surrounding rural landscape
Listed Building	LB7408	C	Alderston Cottage Or Bloom Cottage Nos 2, 7 And 9 Main Street	Y	12.7 km E	Livingston Village and surrounding rural landscape
Listed Building	LB7411	C	5 Houses. Known As The Old School House And The Danders, 1 Main Street	Y	12.7 km E	Livingston Village and surrounding rural landscape
Listed Building	LB7412	C	Bloom Cottage 3 And 5 Main Street	Y	12.7 km E	Livingston Village and surrounding rural landscape

Type	HES Reference	Grade	Asset Name	In ZTV	Distance from CSA	Group
Listed Building	LB7422	C	Bloom Cottage No 1; The Shop; Livingston Inn Cottages Nos 1 And 2, 4,4B; 6 And 8 Main Street	Y	12.7 km E	Livingston Village and surrounding rural landscape
Listed Building	LB14190	B	Murdostoun Castle, Lodge	Y	12.9 km SW	Suburban Motherwell Listed Buildings
Listed Building	LB38235	C	Cambusnethan, Kirk Road, Cambusnethan Old Parish Church (Church of Scotland) Including Church Hall, Vestry And Session House, War Memorial, Boundary Wall, Gatepiers, Gates And Railings	Y	12.9 km SW	Suburban Motherwell Listed Buildings
Listed Building	LB45605	C	Wishaw, Belhaven Terrace, St Andrews Episcopal Church Including Boundary Wall	Y	12.9 km SW	Suburban Motherwell Listed Buildings
Listed Building	LB47935	C	Wishaw, Ballater Crescent, Marker Post	Y	12.9 km SW	Suburban Motherwell Listed Buildings
Listed Building	LB47937	C	Wishaw, 19-21 Campbell Street	Y	12.9 km SW	Suburban Motherwell Listed Buildings
Listed Building	LB47938	C	Wishaw, 43-45 Clelland Road Including Boundary Wall	Y	12.9 km SW	Suburban Motherwell Listed Buildings
Listed Building	LB47943	C	Wishaw, 9 Glencairn Avenue, Craigneuk	Y	12.9 km SW	Suburban Motherwell Listed Buildings
Listed Building	LB47944	C	Wishaw, Kenilworth Avenue, Reformed Presbyterian Church Including Boundary Wall and Railings	Y	12.9 km SW	Suburban Motherwell Listed Buildings
Listed Building	LB47945	C	Wishaw, 9 Kenilworth Avenue, Reformed Presbyterian Church Manse	Y	12.9 km SW	Suburban Motherwell Listed Buildings
Listed Building	LB47946	C	Wishaw, 161 Kirk Road Including Boundary Wall	Y	12.9 km SW	Suburban Motherwell Listed Buildings
Listed Building	LB47947	C	Wishaw, 177 Kirk Road Including Boundary Wall	Y	12.9 km SW	Suburban Motherwell Listed Buildings
Listed Building	LB47948	C	Wishaw, 307 Kirk Road, Vine Cottage	Y	12.9 km SW	Suburban Motherwell Listed Buildings

Type	HES Reference	Grade	Asset Name	In ZTV	Distance from CSA	Group
Listed Building	LB47950	C	Wishaw 3-19 (Odd Nos) Main Street And 2 Caledonian Road	Y	12.9 km SW	Suburban Motherwell Listed Buildings
Listed Building	LB47951	C	Wishaw, 57-59 (Odd Nos) Main Street	Y	12.9 km SW	Suburban Motherwell Listed Buildings
Listed Building	LB47955	C	Wishaw, 26-30 (Even Nos) Main Street	Y	12.9 km SW	Suburban Motherwell Listed Buildings
Listed Building	LB47956	C	Wishaw, 32-38 (Even Nos) Main Street	Y	12.9 km SW	Suburban Motherwell Listed Buildings
Listed Building	LB47957	C	Wishaw, 40-50 (Even Nos) Main St	Y	12.9 km SW	Suburban Motherwell Listed Buildings
Listed Building	LB47958	C	Wishaw, 206-216 (Even Numbers) Main Street	Y	12.9 km SW	Suburban Motherwell Listed Buildings
Listed Building	LB47963	C	Wishaw, 147 Stewarton Street, Coltness Masonic Lodge	Y	12.9 km SW	Suburban Motherwell Listed Buildings
Listed Building	LB47977	C	Bonkle, Allanton Road, Woodypoint Estate, Bridge	Y	12.9 km SW	Suburban Motherwell Listed Buildings
Listed Building	LB47978	C	Bonkle, 251 Bonkle Road, Auchter House Including Gatepiers and Railings	Y	12.9 km SW	Suburban Motherwell Listed Buildings
Listed Building	LB47980	C	Bonkle, 1 Church Road	Y	12.9 km SW	Suburban Motherwell Listed Buildings
Listed Building	LB47981	C	Newmains, 144 And 144A Manse Road Including Gatepiers	Y	12.9 km SW	Suburban Motherwell Listed Buildings
Listed Building	LB47984	C	Overtown, Main Street, Overtown Parish Church (Church of Scotland)	Y	12.9 km SW	Suburban Motherwell Listed Buildings
Listed Building	LB47985	C	Overtown, 148 Main Street, Overtown Parish Church Manse Including Boundary Wall	Y	12.9 km SW	Suburban Motherwell Listed Buildings
Listed Building	LB48015	C	Cambusnethan, Kirk Road, Cambusnethan North Parish Church Including Church Hall and Boundary Wall (Church Of Scotland Formerly Free Church)	Y	12.9 km SW	Suburban Motherwell Listed Buildings

Type	HES Reference	Grade	Asset Name	In ZTV	Distance from CSA	Group
Listed Building	LB49232	C	141-145 (Odd Nos) Main Street, Ymca Building	Y	12.9 km SW	Suburban Motherwell Listed Buildings
Listed Building	LB49604	C	Wishaw, 57 Kirk Road, Former Cinema	Y	12.9 km SW	Suburban Motherwell Listed Buildings
Listed Building	LB49605	C	Wishaw, 59-69 (Odd Nos) Kirk Road, Mecca Bingo (Formerly Green's Playhouse)	Y	12.9 km SW	Suburban Motherwell Listed Buildings
Listed Building	LB666	C	Bonkle, 3, 5 And 7 Allanton Road	Y	12.9 km SW	Suburban Motherwell Listed Buildings
Listed Building	LB667	C	Bonkle, 9 Allanton Road	Y	12.9 km SW	Suburban Motherwell Listed Buildings
Listed Building	LB669	B	Bonkle, Murdostoun Road, Murdostoun Bridge	Y	12.9 km SW	Suburban Motherwell Listed Buildings
Listed Building	LB691	C	Bonkle, 2 Allanton Road	Y	12.9 km SW	Suburban Motherwell Listed Buildings
Listed Building	LB14539	C	Hill House, High Brae	Y	8.5 km NE	Torphichen Conservation Area and surrounding environs
Listed Building	LB14542	C	Torphichen Free Church (Now Church Hall)	Y	8.5 km NE	Torphichen Conservation Area and surrounding environs
Listed Building	LB14550	C	Cottages, Broomparkwell	Y	8.5 km NE	Torphichen Conservation Area and surrounding environs
Listed Building	LB18189	C	Low Brae, Ivy Cottage	Y	8.5 km NE	Torphichen Conservation Area and surrounding environs
Listed Building	LB14225	C	Addiewell Farm	Y	10.9 km SE	West Calder and Addiewell
Listed Building	LB51118	C	43 Main Street, Railway Inn	Y	10.9 km SE	West Calder and Addiewell

Type	HES Reference	Grade	Asset Name	In ZTV	Distance from CSA	Group
Listed Building	LB15325	B	Cottages and Public House, Linlithgow Bridge	Y	13.6 km NE	Linlithgow Bridge
Listed Building	LB14203	C	East Whitburn House	Y	5.1 km E	Blackburn